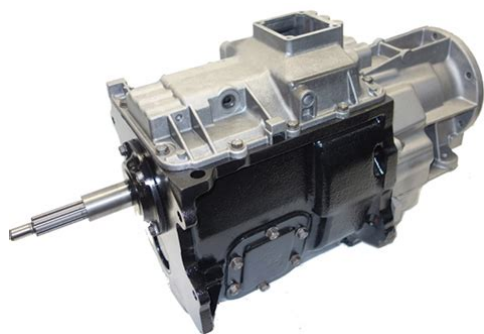


94 chevy 4x4 manual transmission



File Name: 94 chevy 4x4 manual transmission.pdf

Size: 4277 KB

Type: PDF, ePub, eBook

Category: Book

Uploaded: 10 May 2019, 12:19 PM

Rating: 4.6/5 from 625 votes.

Status: AVAILABLE

Last checked: 18 Minutes ago!

In order to read or download 94 chevy 4x4 manual transmission ebook, you need to create a FREE account.

[**Download Now!**](#)

eBook includes PDF, ePub and Kindle version

[Register a free 1 month Trial Account.](#)

[Download as many books as you like \(Personal use\)](#)

[Cancel the membership at any time if not satisfied.](#)

[Join Over 80000 Happy Readers](#)

Book Descriptions:

We have made it easy for you to find a PDF Ebooks without any digging. And by having access to our ebooks online or by storing it on your computer, you have convenient answers with 94 chevy 4x4 manual transmission . To get started finding 94 chevy 4x4 manual transmission , you are right to find our website which has a comprehensive collection of manuals listed.

Our library is the biggest of these that have literally hundreds of thousands of different products represented.



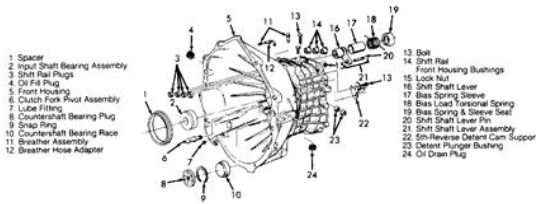
Book Descriptions:

94 chevy 4x4 manual transmission

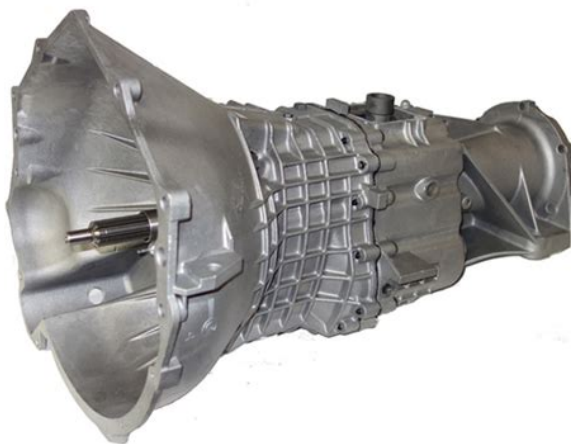


The transmissions included automatic models 4L60 and 4L80, the Borg Warner T5 manual and New Venture manual models 3500 and 4500. These transmissions each require a different visual identification process, however, locating the identification tag attached to the drivers side of the transmission case is a start. Since this tag may or may not be present, visual methods are necessary for identification. Having a manual or automatic transmission determines the steps to be taken. Step 1 Locate the ID tag. Normally riveted to the transmission case, this tag identifies the transmission by model number. Automatic transmissions include a portion of the vehicle identification number, or VIN, which can be matched to the VIN tag found on the lower left corner of the drivers side dashboard. According to Malibu Racing.com, the 4L60 has a square pan with 16 bolts. The 4L80 has a rectangular pan with one rounded corner and 17 bolts fastening the pan to the transmission. Step 3 Identify the New Venture 3500 and 4500 visually. According to Motivegear.com, the NV4500 has a castiron casing with an aluminum shift cover on top. The bell housing is not integral to the transmission and warning labels may be attached to the transmission specifying the use of Castrol Syntec fluid only. The NV3500 is an allaluminum casting with the bell housing integral to the transmission. Identify the Borg Warner T5. References Nasty Z28 Chevy Transmission Identification and Decoding Malibu Racing Automatic Transmission Identification and Information About the Author This article was written by the It Still Works team, copy edited and fact checked through a multipoint auditing system, in efforts to ensure our readers only receive the best information. To submit your questions or ideas, or to simply learn more about It Still Works, contact us. Photo Credits panne image by Charly from Fotolia.com More Articles How to Identify a TurboHydromatic. How to Identify a 350 Transmission How do I Identify an Automatic.<http://www.farmbureauchoices.com/upload/engineering-mechanics-dynamics-12th-edition-solution-manual-online.xml>

- 1.0.



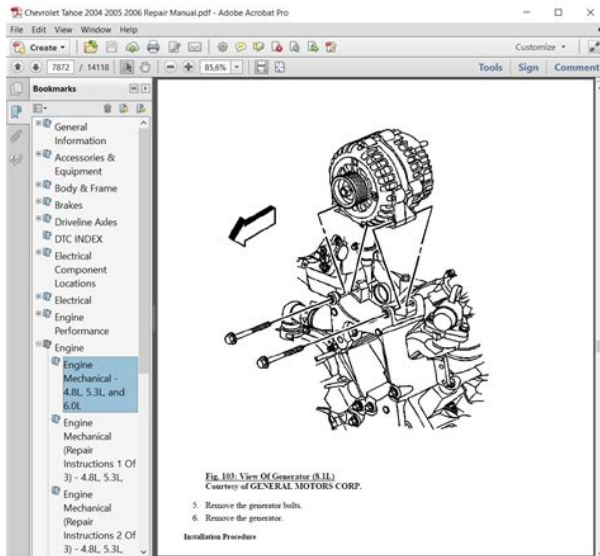
How to Identify a 700 R4 Transmission How to Identify a 2004R Transmission How to Identify a BorgWarner T10. Please try again. Please try again. Please try again later. Register a free business account Please try your search again later. High performance Stage 2 Shift kit. New bushing set. All new lipseals and gaskets. New Teflon rings. New seals. New filter. Modifications to planetarys for better lubrication. Plastic accumulators replaced with aluminum accumulators. Remanufactured shift governor with nylon gear. 500 Boost Valve. High Performance heat treated Heavy Duty Sun shell. High Performance double cage 29 element input sprag. Kevlar band. High Performance. Performance pump with hardened pump rings. Modified 34 clutch oil circuit to make 3rd and 4th clutches last. Corvette Band Apply Piston. Street Strip kit or Mild shift customer preference. FREE Stock Torque Converter. FREE, New Shift Solenoids. To calculate the overall star rating and percentage breakdown by star, we don't use a simple average. Instead, our system considers things like how recent a review is and if the reviewer bought the item on Amazon. It also analyzes reviews to verify trustworthiness. Through the 1950s, all makers were working on their own automatic transmission, with four more developed inside GM alone. All of GMs early automatic transmissions were replaced by variants of the TurboHydramatic by the 1970s. Manually shifted on Column. The basic rearwheel drive TurboHydramatic spawned two frontwheel drive variants, the transverse TurboHydramatic 125, and the longitudinal TurboHydramatic 425. A third variant was the lightduty rear wheel drive TurboHydramatic 180 used in many European models. Also manufactured and used by Holden as the Trimatic transmission. Ford led the design of the 10speed transmission, as well as filing the design patents for said transmission. <http://mcaschool.com/files/fckeditor/engineering-mechanics-dynamics-12th-edition-solution-manual-chapter-16.xml>



According to an official report by the SAE Society of Automotive Engineers the design of the 10speed gearbox is essentially all Ford, while GM was responsible for designing the 9speed 9T

transverse automatic gearbox. As part of their joint venture, Ford will let GM use the 10-speed transmission with rights to modify and manufacture it for their own applications. Retrieved 20190716. Retrieved 20190716. By using this site, you agree to the Terms of Use and Privacy Policy. After that things changed. My shifter moves like it is in neutral. When it is in Both engines are throttle body fuel injection. We found another Need to know if it is compatible to the 95. They are What does that mean and how do I find out which one my truck is Please refer to CarGurus Terms of Use. Content will be removed if CarGurus becomes aware that it violates our policies. I'd replace the sensor, it Though, a truck isn't Will I have to make changes to the EFI in order for it to run correctly. If so what thanks I don't have to get it inspected anymore and was thinking about putting headers on it with a dual exhaust. Will I have to make changes t. Please refer to CarGurus Terms of Use. We analyze millions of used cars daily. Used cars with Manual Transmission for Sale on carmax.com. Take advantage of our NV4500 Manual Transmission experience and expertise. Shifts nicely. Our Chevy NV3500 transmission is for sale at our lowest price yet. Used pickup trucks with Manual Transmission for Sale on carmax.com. The transmission comes with one overdrive gear, a light aluminum housing case, and can be adapted for use in 4 wheel drive. Search new and used cars, research vehicle models, and compare cars, all online at carmax.com Brand Chevrolet. Looking to sell this transmission, came out of my old car that I parted out. Automatic transmissions Early models. Find Chevy 5 Speed Manual Transmission at the best price. Chevy 2500hd 5 speed truck.

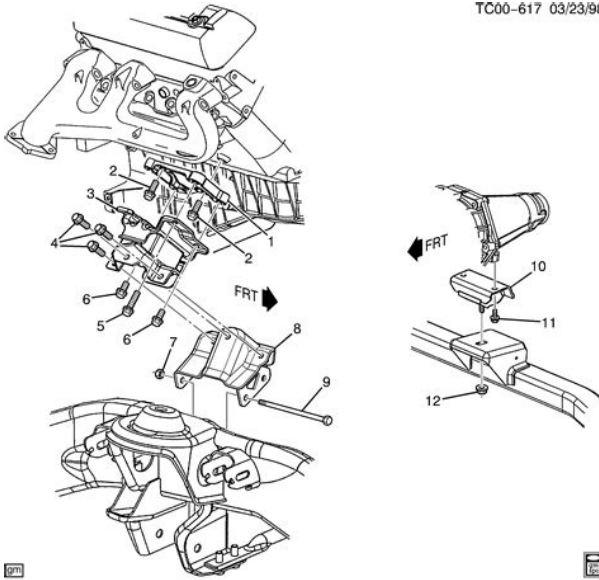
SOLD SOLD SOLD SOLD SOLD SOLD 1987 Chevrolet Scottsdale V20 4X4 454ci Manual 4 Speed. If you are shopping for a used Chevrolet automatic transmission or manual for your car, truck, van or SUV, then you came to the right place. Find 4X4 Manual Transmission Trucks at the best price. Browse our daily deals for even more savings! Search. Every unit has been upgraded and tested to the max. Having issues diagnosing problems with your NV4500 GM or Dodge 5 Speed manual transmission we can help. The Y-Yard Sells Quality Parts. Skip to content. 5-Speed Manual Overdrive. It is now widely considered to be the best rendition of the finest overdrive automatic transmission ever produced. History It was released in 1996 behind the 4.3L V6 engine. It was released more broadly against the V8 engines in 1997 and was phased into full implementation at GM by 1998 in both RWD car platforms and trucks in both 2wd and 4wd configurations. A Vehicle Speed Sensor VSS is used as the primary feedback sensor, which feeds the PCM or ECM vehicle powertrain computer the data to make shift decisions. The engineering of this system is not regarded as a complication, but an elegant simplification and further improvement to this transmission. GVW, Electronically controlled, although the transmission sees factory service in trucks up to 8600 lbs. Now a darling of the transmission building aftermarket, the 4L60E is capable of transmitting impressive power from both truck and performance car applications. Identification The transmission has a square oil pan. The previous versions featured a four-bolt square bolt pattern at the adapter or tailhousing. Additionally, the removable bellhousing is also another distinguishing feature. Deep pan versions require as much as 14 quarts. Length and volume of the cooling circuit will vary and will require an additional amount.



<http://www.bosport.be/newsletter/bose-wave-ii-instruction-manual>

New Versions Rising However, these versions have strengthened and improved components for the significant power outputs of GMs impressive line of Gen. The 4L65E was introduced in 2001 as an HD version of the 4L60E. It has a stronger planetary and a strengthimproved output shaft. This sensor is located in the front pump assembly. It was fully implemented in all versions by 2008. Individuals swapping these parts through and across years should be aware of the compatibility issues that this may present. Transfer Case Adaptability Both 2wd and 4wd versions of the 4L60E can be used equally well, and there are no inherent advantages to either one once you have installed our adapter assembly. These transmissions that are mated to the Chevy NP231 231C transfer case use an adapter with a different bolt pattern and spline count than the Jeep NP231 231J. Engine Compatibility and Adaptability Carbureted engines will require a Throttle Position Sensor. Individuals converting to earlier engines or engines not controlled by a GM PCM should consider the TH700R4 as the simpler and costconscious alternative. These listed below were predominately for the North American market. If interested, we welcome you to contact us. Summary GM has scored another hit with this intelligent setup, that puts the engine and transmission under the same management. It is handsdown one of the most respectable transmissions of our era, and a very compelling Jeep conversion transmission. The 4L60E is a very attractive swap option for all Jeeps, with the exception of the CJ5 and other short wheelbased Jeeps due to powertrain length and driveshaft angle issues. Adaptability to nearly all other Jeeps is exceptional. Please follow social distancing practices. If you are at risk or uncomfortable attending, please refrain. Conditions are as reported to our office. Items are sold in the order listed below. The state reserves the right to remove auction items up to and including sale day.

<http://huntincesma.com/images/canon-pc-20-manual.pdf>



I replace my tranny and as doing so I dont know were the black rubber hoses connect to I do know that one goes to the transfer case and the other one goes to the transmission but dont know where the other ends go to. If this brings no joy then you may need to seek professional help. It's the silver line next to the trans dipstick tube. It will come up and connect to a hose that will run to the base of the carburetor. The transmission will work without this line, but the shifts will be hard as if the throttle was all the way to the floor. You can read more here and make your cookie choices. By continuing to use this site you agree to us doing so.

Mercon V Mercon 5 I happen to have read the Different types of trans fluids are different viscosity just like engine oil, so using universal trans fluids can be just like using the wrong weight of engine oil in your car. Next, MERCON V was developed BY FORD FOR FORD. A pic of the back of a MOTORCRAFT FORD BRAND bottle of mercon V is provided below for proof. Also, GM has a TSB out that suggest nothing but DEXRON VI be used in any car requiring dexIII or dex VI. The TSB even suggest NOT to use the DEX III anymore for any vehicle. Therefore universal fluids that say they work for dex III is NOT suggested by GM. This is because the patents expired on dexIII meaning there is no regulation anymore on its makeup and companies are not required to add the same friction modifiers to it anymore because there is no patents on it. I work at GM dealer so I service millions of cars, not just 1700. Over some General service mechanic Especially when your back up to your That's why cars are always Just not worth it on what Ya dealerships are Unless you That is the best Ive included a pic of vehicles and types of Automatic transmission fluid Please! AcDelco. AcDelco is a by product that GM.

<http://huounaixunghe.com/images/canon-pc1060-copier-manual.pdf>



that if anyone can argue it's fine. If it's not, it doesn't matter. Terms: what there are no any of these fluids if it's in between then use. And yes, they make fluid compatible with both Silverado four-wheel drive extended cab 5.7. Please refer to CarGurus Terms of Use. It was actually listed on CarFax or CarGurus. Used to go to the grocery store and church. My parents have owned this vehicle for many many years. I installed HID kit 10K about 10 years ago, still turns on every time just like my truck. I would recommend any Chevy or non-Chevy owner this truck especially the 9698 Vortecs. These trucks are slowly disappearing and increasing in value, and are known for high mileage, mileage is just a number to these trucks. Like a rock, the most longest lasting trucks on the road. Anyone who has to also work on it. Parts are cheap and plentiful. I have put my truck through a lot, if it doesn't rust out I'll probably rebuild the automatic transmission 4L60e and fix the air conditioning so I don't have to recharge it every year. I get 21 mpg average out of the 5.7 with 5 speed auto. Since I've got it it's got a crate motor and brand new transmission, simply because I WANT to drive this truck another 20 years before I give it to my son. In 2016 the AC compressor went bad but it didn't affect the performance of the truck. It runs great and looks good for a 24 year old truck. I love it but have to sell it just sits on my drive way and someone else can get some use out of it now. Faouzi was great THANK YOU! and did NOT pressure us to buy a car. Faouzi insisted we test drive the car and wanted us to make sure to take it on the highway. Before we left the owner came out, thanked me and shook my hand. WOW that's not something you get at every dealer. My family and I will definitely be back in the future and the first place we go. Very sturdy and dependable truck. In 1995 1998 from personal ownership of a 97 the interior changed considerably.

The comfort of the 94 is on par with the 97 that I owned back in 2001 2004. My personal preference for interior design is my 94 over the 97. This is a Short Wide Box and standard cab, which I believe is destined to become a classic. I now have 338,000 miles on original 350 gas engine and automatic. I have only replaced the radiator and electric fuel pump. Small annoying things have finally failed or become hard to use like the mirrors are loosening and do not hold position well. The anodizing on the aluminum wheels is beginning to look a little rough. Still looks really good for its age like Dolly Parton. It is not pampered but gets a lot of highway miles. Braking on this truck has always been below average with a soft pedal under a hard stop. Kind of like me, a senior citizen but still going and nothing major has happened. Steering is still tight with no looseness in the front suspension or steering. Still running on the original drive shaft and rear differential. Body and interior are still tight with no rattles or noises. Full gauges set not the skimpy gauges of new vehicles. I love this truck. I would not be afraid to head out on a long trip with this truck. It will be pulling a small travel trailer next year. I worked with Frank and he landed me on the perfect vehicle and was able to secure an AWESOME rate for me through a really competitive bank. His customer service was out of this world. He listened to what I needed, including payment range and what I needed in the vehicle and got it right on the first shot. I never once felt as though my concerns weren't valid to these folks. I would HIGHLY recommend Frank to anyone that is even thinking about purchasing a vehicle!

Thanks!!! The power window switches on the driver side need to be better spaced. The staff goes out of their way to be certain you are comfortable and then they ask you what your perfect vehicle would be.

<https://swotin.com/wp-content/plugins/formcraft/file-upload/server/content/files/1627f5a27af49c---br others-sewing-machine-ls-2125-manual.pdf>

Once the questions are answered they go out into their giant inventory and find exactly what you need. I have brought many friends and family there and all of them are so happy with their vehicles because the best car deal doesn't mean cheapest price. Paying a few hundred more for a truck that is in perfect running condition and is a local one owner is a far better deal than paying a couple thousand less for a Canadian, who knows how many owners, that is rusted through. I am a customer forever!! The year 1886 is regarded as the birth year of the modern car when German inventor Karl Benz built his Benz Patent Motorwagen. Cars became widely available in the early 20th century. One of the first cars that were accessible to the masses was the 1908 Model T, an American car manufactured by the Ford Motor Company. Cars were rapidly adopted in the US, where they replaced animal-drawn carriages and carts, but took much longer to be accepted in Western Europe and other parts of the world. No problems worth noting. Its equipped with the 5.7L V8 and Auto Trans. Other taxes may apply. To find out more about the cookies we use and how to control them, please visit our privacy, cookies and data protection page. We offer quality rebuilt manual transmission, parts and rebuild parts kits that are designed to be top of the line. After locating correct unit a link is supplied to provide detailed information on specific kit and parts that are available for your unit. Information is provided for General Motors 3 speed, 4 speed, 5 speed and 6 speeds manual transmissions. Those from 1955-68 may have electric overdrive. Some of 1964-65 units have larger gears with the same tooth count as the 1940-68 units. Fully synchronized with 30 tooth synchro rings. 1966-69 units may have electric overdrive. It has a four step cluster and all the gears are helical cut. Has case casting number T161X. Found in heavy duty applications. Fully synchronized with 36 tooth synchro rings.

This is the only GM 3 speed with the same bearing front and rear. This transmission is found in performance applications. Fully synchronized with 36 tooth synchro rings. Same unit as Ford RAT except for a GM bolt pattern to the bell housing. Has R282015 cluster gear. Found in heavy duty applications. Casting number T10XX or 1304 are on passenger side of case. They all have 9 bolt side covers and 36 tooth synchro rings. Reverse shift lever is located in the extension housing, along with main shaft reverse which is a straight cut gear. Some of the early units, found mostly in Corvettes, have a front nut like the Muncie M21. 1984-88 units have overdrive. The side cover has 7 bolts and 2 shifter cams. The synchro rings have 36 teeth and the unit has a 4 step cluster gear. Reverse gears are helical cut and are located in the extension housing. The side cover has 7 bolts and 3 shifter cams. The synchro rings have 30 teeth and the unit has a 5 step cluster gear. Reverse gears are straight cut and are located in the main transmission case. Shifter assembly is attached to the top of the extension housing where the two arms meet. The main case is open at both ends, the bell housing. There is an internal single rail shift linkage with the shifter mounted on top of the extension housing. Front and rear main bearings are ball type and the cluster gear has a shaft running through it, that is supported by loose needles. Case casting is number 1353. Front and rear main bearings are tapered. The cluster gear is solid and is supported on each end by cylindrical roller bearings located in the case. Case castings numbers are 1351 or 1352. The Isuzu logo is cast into the left side of the case. Is not found in the Chevy LUV. It has a rectangular cast iron front bearing retainer and a 27 tooth rear output shaft. The front and rear countershaft bearings are both 25x62x17. Side loaded with either aluminum or cast iron case and used in both gas and diesel applications.

All of these units are 3 speeds with Overdrive. All gears on the countershaft are removable except for 1st. Early units have threads on the input shaft and do not have a front seal. Has GM casting

numbers and one P.T.O. covers. Nonsynchronized 1st with brass synchro rings for 2nd4th. All main shaft gears ride on bushings pressed on the shaft. The only gears that are removable from the countershaft are 3rd and 4th. Has GM casting numbers and two P.T.O. covers. Nonsynchronized 1st gear, synchronized 2nd4th. There are no brass synchro rings. Casting number is C9XXXX. All gears, including reverse, are helical cut. See New Process 435 for more information. Casting number is C9XXXX The bell housing. is not part of this transmission. It has a removable tube that the throwout bearing rides on. The main bearing in this unit is comprised of caged needles in shell races. Loose needles and flat thrust bearings are used throughout the transmission. Casting number is 1338. Limited parts availability. Isuzu logo is cast into the drivers side of the case. This is found only in GM diesel applications and has a different starter position than the unit that goes into the Isuzu vehicles. Aluminum case with top cover, internal singlerail shift with the shifter mounted on the extension housing. Casting numbers on the case, cover or extension housing are 1351 or 1352. 5th gear overdrive is located at the rear of the transmission in the extension housing. The cluster gear is supported on both ends by cylindrical roller bearings. The number on the front cluster gear is DK55836. All five synchro rings are brass. If you are unable, you can check the number of the front cluster bearing. The number on the front cluster gear bearing is 67010BCE. These similar transmissions have three different designs and designations. Teardown is necessary before ordering rebuild kit as the differences between them are integral. It is a fully synchronized Overdrive transmission including reverse.

It may be identified by a tag attached to the P.T.O. cover. The four main supporting bearings in this unit are tapered. Reference Guide Parts illustration. Features a strong 5.7L V8 with smooth 5 speed manual transmission and 4WD. The exterior is Silver Metallic with Cooper all terrain tires and tow package. Prices include Dealer Delivery and Handling Charges. We update our website inventory frequently, but our inventory changes with recent sales. Mileage may change slightly due to test drives. We are not responsible for any errors or omissions on this page. Please feel free to call us before you visit. Originally released as a five speed unit, a second overdrive gear was added to the Allison 1000 for the 2006 model year, and the six speed gearbox continues to grow with the 6.6L Duramax diesel. The combination is popular enough that it is much less typical to see manual transmissions in GMC and Chevrolet HD pickups than those of competing brands. The transmission is a bit of an oddity in that it is a four speed, overdrive transmission. Do to its wide ratio spread and relatively tall first gear ratio, its not often sought after in 6.2L diesel applications. The 1992 to 1994 model year edition features a lower first gear ratio and favorably higher overdrive ratio. The NV4500 did not find its way into the Duramax platform, GM choosing instead to offer a ZF 6 speed manual transmission. Shortbed trucks 1500 series only rode a 117.5inch wheelbase and had a 6.5foot cargo bed. Long beds, in all three series, had a 131.5inch wheelbase and 8foot bed. Extendedcab pickups rode a 155.5inch span with 8foot bed, or 141.5inch with 6.5foot bed. Antilock rear brakes were standard. Base engine was a V6, but a broad range of V8s were available, including a diesel. Sportside trucks short bed only had flared rear fenders; those with regular fenders were called Fleetside. Also optional was the big 7.4liter gas V8, making 230 horsepower. A more potent variant of the 7.

4 went into the 454 SS muscle truck, which was discontinued in 1994. Each engine was available with either manual shift or an automatic transmission. Gas engines had a 5speed manual, except the H.D. 4.3liter, which got a 4speed. So did diesel trucks. By 1991, 3speed automatics were gone; all were 4speed. All 4wheeldrive models used InstaTrac, an ondemand, parttime 4WD system. 4WD trucks had shiftonthefly capability and automaticlocking hubs. Fourspeed manual gearboxes departed in 1992, when a 190horsepower turbodiesel V8 debuted for heavyduty use. A 155horsepower, 6.5liter diesel replaced the 6.2liter in 1994. Two years later the normally aspirated engine was replaced with a new 6.5 turbodiesel with 180 horsepower. Shortbed Sportside have a more sporty appearance and, with a larger V8, move impressively. Braking can be a problem with

rear antilocking, when the bed is unladen. Fourwheel ABS on later models is a better bet. Gloveboxes are tiny. Ride quality is better than in prior pickups, but higher capacity models don't take bumps so well when the box is unloaded. The V6 still isn't ideal for heavy work, but the 5.0 liter V8 is now a smooth, capable choice except for serious towing or hauling. The 5.7 V8 feels much livelier, furnishing robust acceleration and fine pulling power. With the exception of Value, these numbers reflect how the vehicle compares against the universe of vehicles, not just against rivals in its class. Lower is better. The problem is a stuck throttle valve inside the transmission. 1990-92 If this does not fix it, GM has revised PROMs for the computers and will even replace the main bearings if all else fails. 1990-95 Usually, the same engine consumes excess oil because the valveguide seals on the exhaust valves are bad and have to be replaced. 1996 Dealer will inspect and replace affected parts. Dealer will inspect and replace affected parts. Dealer will inspect and replace affected parts.

Therefore, we recommend visiting websites that list used cars for sale to get a better idea of what a specific model is selling for in your area. Our editors test drive and thoroughly evaluate virtually every new car, truck, minivan, and SUV sold in America. The NV4500 transmission was the highlight of this new venture. Featuring a granny low first gear coupled with a fifth gear overdrive, the stout NV4500 is truly the best of both worlds. All forward gears are fully synchronized. The initial Dodge version offered a synchronized reverse. The transmission case is cast iron with an aluminum top cover. The case measures 12.375 inches and features dual PTO ports. For most conversion applications, we like the Dodge gas version transmission with a GM input shaft. This allows the shortest transmission length for most applications. The GM input shaft from a 6.341 early transmission will not fit the Dodge transmissions. This oil is available at your local Dodge authorized dealer under Part No. 4874459 quart, or your local GM authorized dealer under Part No. 12346190 quart. Unlike regular petroleum oil that breaks down when it gets too hot, this synthetic oil is made up of different properties that do not break down. The transmissions are also equipped with synchronizer rings that are made of a fibrous material. The wrong fluid will cause the unit to develop "sticky" shifting. If the wrong fluid is used, more than likely you will have to have your transmission rebuilt. NOTE Castrol Syntech is NOT the same as Castrol Syntorq. The tag provides the transmission model number, build date, and part number. Be sure not to remove the I.D. tag during the conversion. The information on this tag is essential for ordering the correct replacement parts. We offer complete transmissions, rebuild parts and a full line of engine and transfer case adapters for the NV4500. Talk with one of our experts today we'd love to help you out!

Our awardwinning history of innovation and expertise ensures we provide quality craftsmanship as we serve our customers with knowledge and integrity.

<http://www.diamondsinthefactory.com/content/bose-wave-ii-instruction-manual>